



Fund for Shared Insight Feedback Grantee Gathering 2016

Participant Bios

A Step Ahead Foundation	3
Akron-Canton Regional Foodbank	3
Alameda County Community Food Bank	4
Anixter Center	4
Arts for LA	4
artworxLA	5
Bain & Company.....	5
Blue Engine	6
Blue Ribbon Commission on the Prevention of Youth Violence	6
Boys & Girls Clubs of the Peninsula.....	7
Chapin Hall at the University of Chicago / CalYOUTH (California Youth Transitions to Adulthood)	7
Center for Employment Opportunities	7
Child Advocates of Fort Bend	8
David and Lucile Packard Foundation	8
Development Gateway	9
East End Neighborhood House.....	9
Edna McConnell Clark Foundation.....	10
El Buen Samaritano.....	10
Epiphany Community Health Outreach Services (ECHOS).....	11
Family Service Center of Galveston County.....	11
Feedback Labs	12
Feeding America	12
Ford Foundation	13
Fund for Shared Insight	13
Genesys Works NCR.....	14
Gleaners Community Food Bank of Southeastern Michigan	14
GlobalGiving	15
Good World Solutions	15
Greater Boston Legal Services.....	16
GuideStar	16
Habitat for Humanity Greater San Francisco	17
Habitat for Humanity International	17
Homeport	18
i.e. communications	18
ICAST	19
Innovations for Poverty Action	19
ioby	20

Keystone Accountability	20
LIFT	21
Liquidnet.....	22
Lone Star Circle of Care	22
Memorial Assistance Ministries.....	23
National Center for Civic Innovation / White House Office of Science and Technology (OSTP).....	23
Neighborhood Housing Services of Chicago	23
New Door Ventures.....	24
Nurse-Family Partnership.....	24
On The Move	25
Oregon Museum of Science and Industry.....	25
ORS Impact.....	26
Our House	26
PACE Center for Girls	26
Phoenix Center.....	27
ProUnitas Inc.....	27
Public Lab.....	28
Queer Women of Color Media Arts Project	28
REDF	29
Regional Food Bank of Oklahoma	29
ReMerge of Oklahoma.....	29
Rockefeller Philanthropy Advisors.....	30
RTI	30
Samaritan Center.....	31
Second Harvest Food Bank of Santa Clara and San Mateo Counties.....	31
Shelby Residential and Vocational Services (SRVS)	32
Spitfire Strategies	32
Springboard To Opportunities	33
SurveyMonkey.....	33
Talent Development Secondary - Johns Hopkins University	34
TeenForce	34
The Greenlight Fund	35
The JPB Foundation.....	35
The Urban Institute	35
The Village for Families & Children	36
The Whitman Institute	36
Union Capital Boston	37
United Way of Buffalo & Erie County.....	37
United Teen Equality Center (UTEC).....	38
William and Flora Hewlett Foundation.....	38
W.K. Kellogg Foundation.....	39
Wishcamper Family Foundation	39
YouthTruth Student Survey	40

Other Consultants and Resource People

Bright Research Group	41
D5 Coalition	41
Esther Kim Consulting	41
E-Tan Consulting	42
Gilbert & Associates	42
IAM Associates	42
OpenSource Leadership Strategies	42
Philanthropic Initiative for Racial Equity	43
The Genius Group Enterprises, Inc.	43

A Step Ahead Foundation

A Step Ahead aims to provide access to long acting, reversible contraception ("LARC") to women in Shelby County, TN.

Claudia Haltom **CEO**

After law school at the Univ. of Tennessee, I was the attorney for the Memphis and Shelby County Health Department for 12 years, followed by 17 years as a Judicial Magistrate at the Juvenile Court. In both positions I saw both data and lives reflecting entry-level poverty. It all began, continued and grew when young women had babies they could not care for. Long acting, reversible contraception (LARC) was not available, thus I founded A Step Ahead Foundation as a non-profit to partner with existing clinics and pay for LARC methods for any woman in Shelby County (soon Tennessee) who wanted that voluntary option.



Sydney Ashby **Director of Research and Clinical Relations**

Sydney Ashby is a native Memphian who has 15 years of experience in the medical non-profit world doing whatever it takes to secure funding. This includes but is not limited to project management, budget development, oversight of operations and cornering random strangers to expound on the virtues of the cause.

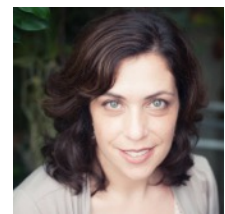


Akron-Canton Regional Foodbank

This Food Bank provides food and other essential items to member hunger-relief programs in eight Northeast Ohio counties.

Jill Oldham **Director, Network Partners & Programs**

Jill leads the Network Partners and Programs staff at the Akron-Canton Regional Foodbank and is responsible for the customer service, compliance, education and programmatic activities for the network of 500 hunger relief programs in an eight-county area. She is an enthusiastic student and practitioner for collaborative leadership methodologies and graphic facilitation.



Katie Carver Reed **Program Services Leader**

Katie Carver Reed is the Program Services Leader at the Akron-Canton Regional Foodbank. She is part of the core team of the Voices pilot program and manages child hunger initiatives.

Alameda County Community Food Bank

This Food Bank distributes food to 240 member agencies including food pantries, soup kitchens, child-care centers, senior centers, after-school programs and other community-based organizations throughout Alameda County CA.

Jenny Lowe

Nutrition & Wellness Program Manager

Jennifer Lowe has been a team member at the Alameda County Community Food Bank since 2013. As the Nutrition & Wellness Program Manager, she oversees the food bank's nutrition education services, and helps to implement the food bank's nutrition policy, ensuring that the food distributed by the food bank is as healthy as possible. She holds master's degrees in Public Health and Social Work from University of California, Berkeley.

Kate Cheyne

Research Manager

Kate joined ACCFB in 2014 to establish a research program that will speak to the challenges low-income adults and children face in Alameda County, and the health impacts of food insecurity and food bank services. She has an MPH from the University of California, Berkeley.



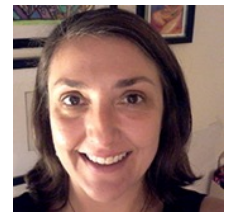
Anixter Center

The Anixter Center provides an array of services and supports to people with developmental disabilities and related challenges so they can live, learn, work and play in the greater Chicago area.

Christine Jensen

Client Support Manager

I am the Client Support Manager at Anixter Center, an agency providing a variety of services and supports to people with disabilities. Part of my role includes implementing the L4G survey with our participants. I enjoy discovering when our services meet the needs of our clients as well as finding feedback regarding how we can improve.



Arts for LA

Arts for LA is a voice for the arts in Greater Los Angeles that informs, engages, and mobilizes individuals and organizations to advocate for access to the arts across all communities.

Abril Iñiguez-Rivas

Program Associate

Abril Iñiguez-Rivas holds a BA in Biology from Pomona College. She went on to study evolutionary genetics at UCLA and later served as the Documents and Records Coordinator at the Immigration Center for Women & Children in Los Angeles before joining Arts for LA in 2016.



artworxLA

artworxLA seeks to combat the high school drop-out crisis with a long-term, sequential arts program that inspires youth in alternative high schools to stay in school, evolve as unique individuals and flourish as creative adults.

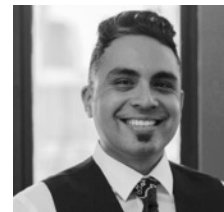
Cynthia Campoy Brophy **Executive Director**

Cynthia founded artworxLA to engage the arts to combat the high school dropout crisis. She has served on committees/panels for the national Creative Youth Development initiative, National Guild for Community Arts Education, CA Cultural/Historical Endowment, LA County Arts Commission. She was Board Chair for Arts for LA, a Durfee Sabbatical recipient, a Coro Fellow, and this year participated in Harvard's "Scaling for Impact" program.



Raúl Flores **Artistic Director**

Raúl Flores is Artistic Director at artworxLA and has been actively involved in arts education for over 15 years. Raúl's background in museum education includes extensive community outreach for the MOCA, Los Angeles, and LACMA. Most recently, Raúl launched the Hollywood Media Arts Academy, which grew to a model program for the impact of arts on alternative education.



Bain & Company

Bain is a leading management consulting firm working globally to help executives make better decisions.

Fred Reichheld **Bain Fellow and founder of Bain & Company's Loyalty Practice**

Fred Reichheld is a Bain Fellow and founder of Bain & Company's Loyalty Practice, which helps companies achieve results through customer and employee loyalty. He is the creator of Net Promoter System®. His work in the area of customer and employee retention has quantified the link between loyalty and profits. Fred has written a number of books, including his latest, *The Ultimate Question 2.0: How Net Promoter Companies Thrive in a Customer Driven World* (HBR Press-Sept. 2011).



Fred is a frequent speaker at major business forums and his work on loyalty has been widely covered in *The Wall Street Journal*, *New York Times*, *Financial Times*, *Fortune*, *Business Week* and *The Economist*. He is the author of eight Harvard Business Review articles on the subject of loyalty.

Fred earned an MBA, with honors, from Harvard Business School and a bachelor's degree, also with honors, from Harvard University.

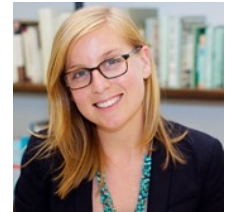
Blue Engine

Blue Engine seeks to increase college-readiness among students most at-risk of never attaining postsecondary degrees by working closely with district high schools in New York City to test innovative uses of human capital and reimagine what classrooms should look like.

Melissa Weston

Senior Manager of Institutional Giving

Melissa began her career providing individualized support to NYC students, first as a City Year Corps Member and then as a College Success Counselor at Bottom Line. Inspired by Blue Engine's commitment to creating the conditions for all students to succeed, Melissa became the organization's first Grants Manager in 2015.



Rebecca Litwin

Senior Manager of Learning & Development

Becca joined Blue Engine's team in 2012 as a math teaching apprentice at Washington Heights Expeditionary Learning School in 9th and 10th grade classrooms. In 2014, she transitioned out of the classroom and onto Blue Engine's program staff. She is a founding member of Blue Engine's design team and currently does programmatic Learning and Development work.



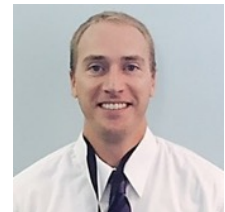
Blue Ribbon Commission on the Prevention of Youth Violence

The BRC seeks to interrupt the cycle of intergenerational poverty in the north side of downtown Wilmington NC by increasing self-sufficiency, social cohesion, collective efficacy, and economic stability through youth violence reduction, positive social development, and positive youth development activities.

Brian Blake

Program Manager

Brian joined the Blue Ribbon Commission in August of 2015. As Program Manager he is responsible for the effort to streamline data collection, analysis, and utilization as well as daily programmatic oversight.



Jana Jones Halls

Executive Director

Jana Jones Halls has been the Executive Director of the BRC since 2013 after making the decision to change careers from teaching to the non-profit sector in order to address the multiple issues faced by families living in poverty and to provide increase opportunities for youth in the Wilmington community.



Boys & Girls Clubs of the Peninsula

BGCP aims to provide low-income youth in East Palo Alto and Eastern Menlo Park with the opportunities they need to graduate from high school ready to succeed in college and/or career.

Krystle Onibokun

Manager, Impact & Evaluation

At the Boys and Girls Clubs of the Peninsula, I measure its impact in helping the community's youth graduate ready to succeed in college or career. Prior to working at BGCP I was a Teach for America Hawaii Corps Member. I hold an undergraduate degree in Economics from Brown University, Master of Education from the University of Hawaii, an MSc in Management, Organizations and Governance from the London School of Economics and Political Science.



Chapin Hall at the University of Chicago / CalYOUTH (California Youth Transitions to Adulthood)

Chapin Hall is conducting CalYOUTH to evaluate the impact of the California Fostering Connections to Success Act on outcomes for foster youth during the transition to adulthood.

Brittani Kindle

Research Assistant

Brittani is a research assistant for the CalYOUTH study, which is an evaluation of the impact of the California Fostering Connections to Success Act on outcomes during the transition to adulthood for foster youth. She is currently a full-time graduate student at the University of Chicago's School of Social Service Administration.



Center for Employment Opportunities

CEO provides employment reentry services to people returning from prison in 11 sites across New York, California, Oklahoma, and Pennsylvania. CEO is committed to serving the most at-risk populations and places an emphasis on providing services to young adults ages 18-25.

Brad Dudding

COO

Brad Dudding works as the COO at the Center for Employment Opportunities (CEO) where he oversees IT, human capital and performance measurement and evaluation. Prior to joining CEO, Mr. Dudding worked at the NYC Office of Management and Budget and at the New York State Controller's Office. Brad was educated at Macalester College, University of Missouri (BA, Economics), and Rutgers University (Masters of Urban and Regional Planning). Brad is also currently an adjunct professor at the NYU Wagner Graduate School of Public Service teaching a class on performance measurement and management.



Nate Mandel
Program Innovator

Nate Mandel works at CEO to facilitate the Constituent Voice project, which aims to collect ongoing beneficiary feedback and implement corresponding program improvements.



Child Advocates of Fort Bend

CAFB provides a voice, heals the hurt, and breaks the cycle of abuse for children in Fort Bend County Texas.

Fiona Remko
Program Director

Fiona Remko, LCSW-S is the Program Director of the Fort Bend Children's Advocacy Center in Rosenberg. Prior to joining the Fort Bend Children's Advocacy Center Fiona worked as a therapist for a non-profit agency and prior to that was the Director of Program Services for The Children's Assessment Center in Houston where she supervised the Forensic Interviewing and Clinical Social Work programs. Fiona also currently serves on the Children's Advocacy Centers of Texas Training Faculty where she teaches interview training to new interviewers in the state.

Ruthanne Mefford
CEO

Ruthanne serves as CEO of Child Advocates of Fort Bend, a nonprofit serving abused and neglected children. B.A., Stanford University; MBA , UCLA; SEP, Stanford Graduate School of Business. Formerly: Vice President, Marriott, Korn Ferry, Ocean Spray. Boards: Stanford Alumni Association, Center For Houston's Future, OakBend Medical Center. Stanford Governor's Award; Houston Impact Award; Child Advocate of the Year.



David and Lucile Packard Foundation

David and Lucile Packard Foundation is a Fund for Shared Insight Core Funder.

Linda Baker
Director, Organizational Effectiveness

Linda joined the Packard Foundation's Organizational Effectiveness team in 2013 as a program officer, where she supported grantees in strengthening their leadership, organizations, and networks to be more effective and better able to achieve their missions. From 2010 to 2013, she served as a program officer in the Local Grantmaking Program with responsibility for grantmaking in Santa Cruz and Monterey Counties. There, she launched the Salinas Youth Initiative, which focuses on building the capacity of organizations serving youth in East Salinas. Prior to joining the Local Grantmaking Program, Linda worked as a program officer in the Children, Families, and Communities Program, working to bring health insurance to all children in California. Before joining the Foundation, Linda worked for the Robert Wood Johnson Foundation in Princeton, New Jersey, in the research and evaluation department.



Development Gateway

Development Gateway is an international nonprofit delivering technology and information solutions for international development.

Development Gateway works with Feedback Labs on their feedback practice project.

Jean-Louis Sarbib **CEO**

Jean-Louis Sarbib, a former World Bank senior Vice President, is the CEO of Development Gateway (DG), host of Feedback Labs. DG is the world leader in co-creating technology solutions with partner country governments. A registered nonprofit organization, DG specializes in technology for international development, with 15+ years of experience working with government agencies, foundations, and private-sector organizations.



East End Neighborhood House

Located in Cleveland, Ohio, EENH compassionately provides culturally competent integrated social services, leadership development and healthy activities that nurture our community's individuals and families—children through seniors—to become self-sufficient and ultimately thrive.

Bianca Butts **Director of Marketing & Outcomes**

Bianca has been working in nonprofit work for 5 years, with the last 2 years focused on gaining more knowledge in developing effective outcomes. She is passionate about community development, juicing, and all things Cleveland.



James Jones **Community Ambassador**

James, is the current Community Ambassador of the East End Neighborhood House, a 109 year old Settlement House in Cleveland, Ohio. He spent 5 years on the road as the Production Stage Manager for the National Broadway Tour of Girls Night, the Musical, prior to joining East End.



Zulma Zabala **CEO**

Zulma Zabala serves as CEO for East End Neighborhood House, a multi-service neighborhood resource center, servicing the Cleveland community since 1907. She is a graduate from the Cleveland Marshall College of Law's dual degree programs of Juris Doctorate of Law and Master of Public Administration. In her role as CEO, Zabala oversees and supervises all agency programs composed of 28 staff members and 92 volunteers. She is a member of the Council of Neighborhood Leaders/CNL, a collaborative of 14 neighborhood agencies that services over 20,000 families in Cleveland.



Edna McConnell Clark Foundation

Edna McConnell Clark Foundation is a Listen for Good co-funder.

Lisette Rodriguez

Vice President Programs

Lisette oversees the Youth Development Fund and PropelNext. She is also in charge of refining the Foundation's investment strategy to deepen the impact of EMCF and its grantees, and oversees evaluation and learning at the Foundation. In her previous capacity as Managing Director of PropelNext, Rodriguez planned, launched and oversaw EMCF's initiative to sharpen the skills and advance the effectiveness of promising youth-serving nonprofits. Before joining the Foundation in 2010, she spent 12 years at YouthBuild USA, where she ran large-scale training and technical assistance programs and provided capacity-building support to early-stage organizations. She holds a bachelor's degree in journalism from Boston University and a master's in organizational development from Fielding Graduate University.



Danielle Scaturro

Director of Program Operations, PropelNext

Danielle's responsibilities include identifying candidates for PropelNext grants, managing the selection process, helping to craft the program, developing systems to measure grantee performance, managing a set of grantee relationships, and working with co-investors. She earned her bachelor's degree from Rutgers University and an MBA from Baruch College, CUNY.



El Buen Samaritano

El Buen is an outreach ministry of the Episcopal Diocese of Texas committed to helping Latino and other families in Central Texas lead healthy, productive and secure lives through high-quality and affordable healthcare, education and financial security services.

C. Yvonne Montejano

Data Analyst

C. Yvonne Montejano is a Data Analyst at El Buen Samaritano and a graduate of the LBJ School of Public Affairs. She has worked in the community health sector for the past four years. Prior to this work, she was a community organizer and educator at the American Friends Service Committee. She enjoys reading, biking, yoga, and spending time with her nieces.

Karen Green

Family Literacy Manager

Karen is currently the Family Literacy Manager at El Buen Samaritano with 12 years of experience working in the field of Adult Basic Education. Karen has a Masters in International Education, and is a Trainer for new ESL and Literacy instructors. She is bilingual and a skilled percussionist.

Epiphany Community Health Outreach Services (ECHOS)

ECHOS improves the quality of life of the most vulnerable and at-risk individuals in southwest Houston by eliminating the disparities in access to healthcare, education and job training.

Cathy Moore **Executive Director**

Cathy Moore, joined ECHOS in 2016 bringing over thirteen years of non-profit experience. Cathy's passion for non-profit work is evidenced by her twenty-four-year history of volunteerism; serving on boards and in mentoring roles with a variety of community based non-profit organizations. Cathy received a B.S. in Special Education from Lesley University.



Teresa Palmer **Follow Up Coordinator**

Teresa has enjoyed working for the past year and a half at ECHOS and serving the clients and supporting the staff. Teresa bakes as a stress reliever and delights in eating the baked goods with her family and friends! She plays tennis in her spare time.



Family Service Center of Galveston County

FSC promotes the mental health and wellbeing of individuals and families in Galveston and surrounding counties in Texas through counseling, education, and prevention.

Karen McWhorter **Development Director**

Ms. McWhorter came to Family Service Center in December 2013 to serve as the Development Director. She is a Licensed Master Social Worker and a Certified Prevention Specialist who has worked to provide support and create connections for children and families for over 24 years. Ms. McWhorter is an experienced grant writer, raising over eight million dollars in funding for organizations such as Communities In Schools of Houston, Inc., The Council on Alcohol and Drugs Houston, and Houston Independent School District. She received her Bachelor's degree in psychology at Baylor University and her Master's degree in Social Work at the University of Houston's Graduate School of Social Work.



Michael Roberson **Director of Quality Assurance**

Mike Roberson, MBA, brings with him over twenty-five years of experience in managing operations and administration in non-profit organizations. He is currently the Quality Assurance Manager at Family Service Center. Mike's area of expertise is in business administration. He has previously worked in healthcare operations with MHMRA of Harris County, the American Lung Association, Methodist Hospital, as well as program development with the Texas Network of Youth Services.



Feedback Labs

Feedback Labs is a convener, connector and hub of knowledge, tools, and resources to accelerate the culture of listening and co-creation between funders, practitioners and the people they seek to help.

Feedback Labs works with Development Gateway on their feedback practice project.

Dennis Whittle

Director and Co-Founder of Feedback Labs

Dennis has worked for 30 years in international aid and philanthropy. He co-founded GlobalGiving, the first global crowdfunding website, and was CEO from 2000 to 2010. GlobalGiving has mobilized \$225 million for nearly 15,000 projects in 165 countries, fueled by hundreds of thousands of individual donors and 130 leading companies and foundations. From 1986-2000, Dennis was an economist at the World Bank, where he worked in Indonesia, Russia, Papua New Guinea, and Niger on agriculture, housing reform, energy efficiency, structural adjustment, and innovation.



Megan Campbell

Manager of Research and Learning

A systems design engineer by training, Megan has over a decade of experience promoting adaptive implementation in aid and philanthropy. Megan helps to set the learning objects and agenda for Feedback Labs by helping determine the right questions to ask, and how we should ask them. She manages the blog and other writing, and leads research and experimentation.



Feeding America

Feeding America is a nationwide network of 200 food banks that provides food to more than 46 million people annually.

Brittany Morgan

Senior Research Specialist

Brittany Morgan is a Senior Research Specialist at Feeding America, the nation's food bank network and largest hunger-relief organization in the U.S. Her work centers on anti-poverty and health promotion initiatives, including research about unique populations such as working families, seniors, and Latinos, as well as programmatic efforts to elevate beneficiary voices in the food pantry setting. Originally from Miami, Florida, Brittany graduated from the University of Chicago and maintains a fond interest in the intersecting worlds of food security, public health, wellness, and social justice.



Trisha Matthieu

Manager, C4C Network Engagement

Trisha is the Manager of Network Engagement for the Collaborating for Clients (C4C) team at Feeding America. She supports food banks interested in engaging in community change work to help improve food security as well as those who want to better engage and partner with the people they seek to help.



Ford Foundation

Ford Foundation is a Fund for Shared Insight Core Funder.

Kathy Reich **Director, BUILD**

Kathy serves at the Ford Foundation as Director of BUILD, a new initiative to strengthen key institutions fighting inequality worldwide. Previously, she was at the David and Lucile Packard Foundation, where she served in various roles including Director of Organizational Effectiveness and Philanthropy, program officer for preschool grantmaking, and policy analyst/editor for The Future of Children journal. Prior to joining Packard, Kathy was policy director at the Social Policy Action Network, served as a legislative assistant on Capitol Hill, and worked for state and local elected officials in California.



Fund for Shared Insight

Melinda Tuan **Project Manager**

Melinda is the project manager for Fund for Shared Insight and manages all aspects of the \$20M funder collaborative. She is an independent consultant who works with the senior leadership of philanthropic organizations to develop strategies for effective philanthropy. Previously, Melinda co-founded and managed REDF, a social venture capital fund that works with a portfolio of nonprofit organizations employing formerly homeless and low-income individuals in market-based business ventures.



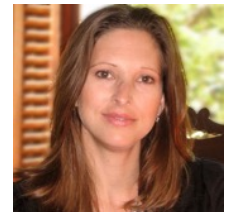
Meredyth Sneed **Project Consultant, Listen for Good**

Meredyth is a Project Consultant to the Listen for Good initiative, and provides direct technical assistance to all 46 grantees.



Michelle Mengel **Project Associate**

Michelle is the project associate for the Fund for Shared Insight. In this capacity, she supports a broad range of operational and programmatic activities. Michelle is an independent consultant to nonprofits and foundations specializing in financial analysis, operations and evaluation. Prior to joining Shared Insight, Michelle was a program officer for the Washington DC office of the Local Initiatives Support Corporation (LISC).



Valerie Threlfall **Project Lead, Listen for Good**

Valerie is the project lead for the Listen for Good initiative of Fund for Shared Insight. She is an independent consultant focused on strategy development and performance measurement design for nonprofit organizations. Most recently, Valerie



served as founding director of the Center for Effective Philanthropy's (CEP) YouthTruth Project, scaling the project from an idea to a nationally recognized survey and data analysis organization capturing youth perspectives. Prior to joining CEP, Valerie was part of the core business team that built a successful start-up biotechnology company, Momenta Pharmaceuticals (publicly traded, \$750MM at peak).

Genesys Works NCR

Genesys Works changes the life trajectory of disadvantaged high school students by enabling them to work in meaningful internships at major corporations during their senior year in high school.

Mahan Tavakoli **Executive Director**

Mahan Tavakoli is the Founding Executive Director of Genesys Works in the National Capital Region. Genesys Works is a social enterprise that changes the trajectory of life for underprivileged high school students, from one destined to a lifetime of low wage, dead-end jobs, to one in which they will fully participate in the economic mainstream. Prior to Genesys Works, Mr. Tavakoli headed up international operations and strategy for Dale Carnegie Training.



Gleaners Community Food Bank of Southeastern Michigan

Headquartered in Detroit, Gleaners operates five distribution centers in five surrounding counties and provides food to 535 partner soup kitchens, food pantries, shelters and other agencies throughout southeastern Michigan.

Bridgett Lomax **Senior Director, Strategic Insight**

Bridgett helped launch Gleaners' evaluation department in October 2015. Since that time, she's worked with staff at all levels to cultivate a culture of evaluation that includes actively collecting input from people served by the food bank's varied and regional programs.

John Kastler **Vice President, Evaluation**

John Kastler is Vice President of Evaluation at Gleaners Community Food Bank of Southeastern Michigan. Prior to joining Gleaners in 1988, he served with the US Peace Corps/Kenya. He received a BA in Business Administration from Central Michigan University and a MA in Public Administration from Wayne State University.



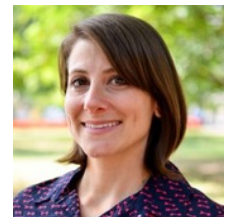
GlobalGiving

GlobalGiving is an online fundraising community that gives social entrepreneurs and nonprofits around the world the opportunity to access money, information, and ideas they need to improve their communities.

Britt Lake

Senior Director of Programs

As Senior Director of Programs, Britt oversees relationships with more than 2,500 nonprofits, including managing all of GlobalGiving's impact measurement, capacity building work, and disaster relief grantmaking. In addition to almost eight years at GlobalGiving, Britt has worked at the Bill and Melinda Gates Foundation and with a variety of nonprofits in Sierra Leone, South Africa, Kenya, and Zimbabwe. Britt holds a B.A. in International Studies from the University of North Carolina - Chapel Hill, a Master's in International Relations from the University of Cape Town (South Africa), and a Master's in Public Affairs from Princeton University's Woodrow Wilson School.



John Hecklinger

Chief Program Officer

As Chief Program Officer, John leads the group that finds effective nonprofits around the world and helps them make the most of GlobalGiving. John's team makes sure GlobalGiving is open and useful to any nonprofit seeking to access ideas, information, and money.



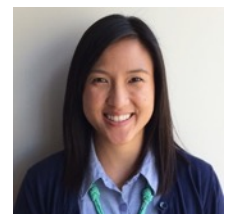
Good World Solutions

GWS is a social enterprise that uses technology to improve worker's lives by giving every worker a free and anonymous channel to report directly to decision-makers about their working conditions, opinions and needs.

Dolly Ngo

Global Operations Analyst

Dolly is a Global Operations Analyst at Good World Solutions, where she manages the implementation of mobile surveys in factories. Prior to her work in the impact space, Dolly worked for three and a half years as a quality engineer. She holds a BS in biomedical engineering from U.C. Irvine.



Melissa Caraher

Business Development Manager

Melissa is Good World Solutions' Business Development Manager. She is passionate about providing a voice for workers in the developing world through collaborative projects with corporate partners so that they can share in the rewards of international trade. Her prior experience includes international sales with business partners across numerous regions including, Latin America, Asia and the Middle East.



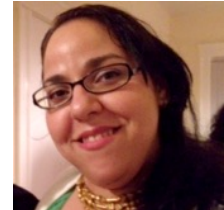
Greater Boston Legal Services

GBLS represents low- income individuals and families in Boston and 31 additional cities and towns in the Greater Boston area, assisting individual clients to secure some of the most basic necessities of life as well as addressing systemic problems that adversely impact their lives.

Sandra Tavarez

AS/LA

I am the Administrative Secretary/Legal Assistant at Cambridge and Somerville Legal Services, a community office of Greater Boston Legal Services. I have been with this organization since June of 2015 and it has been quite eye-opening transitioning from a criminal law/real estate legal assistant position which I held for fifteen years to working in civil legal aid. I find the work incredibly rewarding. I am proud to have a direct impact on the lives of low-income individuals by lending a helping hand and simply listening to our constituents, particularly when no one else does. Feedback received via this grant reinforces the need to continue the good work that we do.



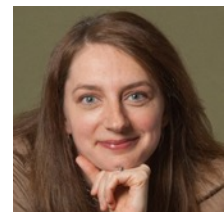
GuideStar

Guidestar seeks to revolutionize philanthropy by providing information that advances transparency, enables users to make better decisions, and encourages charitable giving.

Eva Nico

Senior Director of Programs

Eva Nico is GuideStar's in-house expert on nonprofit strategy and evaluation issues. Her goals are to help nonprofits share their full story using the GuideStar Profile and to combat the Overhead Myth. Eva has over 13 years of experience in the social sector a Ph.D. in Physics from Oxford University.



Jasmine Marrow

Director of Nonprofit Strategy

Jasmine's goal is to help nonprofits share their full and complete story with the world using their GuideStar Nonprofit Profile. Jasmine has over a decade of nonprofit experience across a variety of sectors and a passion for connecting people and organizations with the tools to help them succeed. She has her Master's of Public Policy from Mills College in Oakland, CA, where she also earned her Bachelor's degree.



Habitat for Humanity Greater San Francisco

HHGSF provides Bay Area families with a springboard to secure a stable future through affordable home ownership, financial literacy and neighborhood revitalization.

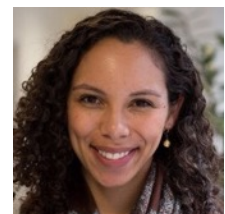
Ann Goggins Gregory **Chief Operating Officer**

Ann is COO at Habitat for Humanity Greater San Francisco where she oversees programs, the social enterprise called the ReStore, HR and Operations. Previously, Ann was a Senior Director at the Bridgespan Group. Her articles defending “good overhead”—such as investments in knowledge sharing and measurement—have appeared in the Stanford Social Innovation Review and Harvard Business Review.



Lauren Shaughnessy **Director of Measurement and Learning**

As the Director of Measurement & Learning at Habitat Greater San Francisco, Lauren leads efforts to understand the impact of Habitat's homeownership model and its neighborhood revitalization efforts. She manages all systems and processes associated with measurement, and helps create a culture for learning and improvement across all departments.



Habitat for Humanity International

In more than 220 communities across the United States, Habitat for Humanity works in partnership with low-income families and coalition partners to revitalize neighborhoods.

Melissa Rivera **Organizational Development Consultant/SME Outcome**

Melissa is an Organizational Development Consultant/SME Outcome Evaluation with HFHI's Neighborhood Revitalization team. She has 16 years of experience in research and evaluation. Her specialties include conducting and managing communications research and program evaluation at the state and national levels. She also has a MA in Interpersonal Communications.



Rebecca Hix **Neighborhood Revitalization Director**

Rebecca Hix has worked with Habitat since 2000. She has extensive experience in designing holistic community development programs in four communities: Des Moines, IA, Milwaukee, WI, Mississippi Gulf Coast and Santa Ana, El Salvador. Currently she is leading design and implementation of the Neighborhood Revitalization, Habitat's community development strategy.



Homeport

Homeport creates healthy, stable homes for low-income residents of Central Ohio through the provision of high quality, affordable rental homes.

Alex Romstedt

Director of Community Life Partners

Homeport is an affordable housing developer located in Columbus Ohio. We currently own approximately 2,500 Section 8 and Tax Credit units throughout the city and surrounding area. In my role of Director of Community Life Partners, I oversee the day-to-day operations of programs and services designed to provide stability to the low and moderate-income families living in our housing.

Laverne Price

Senior Director of Resource Development

Homeport is an affordable housing developer located in Columbus Ohio. As Senior Director of Resource Development, I am responsible for all aspects of sponsor, funder, donor and partner relationships, which support our mission.

i.e. communications

i.e. communications works with Chapin Hall and CalYOUTH on their feedback research project.

Laurie Kappe

President

Laurie Kappe, founder and president of i.e., has 30 years of experience in public policy advocacy and communications consulting. Clients come to her for her experience, expertise, and networks. She has a bachelor's degree from the University of Chicago and a master's from the University of California, Berkeley.



Lilia Granillo

Associate

Lilia Granillo is a communications associate at i.e. communications, a strategy and communications firm tackling complex social issues to improve the well-being of children, families, and communities. She was previously a project coordinator for a business improvement district in Downtown El Paso, Texas, where she managed grants and initiatives that spurred economic development in the region.



Maura Keaney

Vice President

Maura Keaney, Vice President at i.e. communications, brings nearly 20 years of experience in partnership building, strategy development, and engagement efforts for nonprofit organizations, foundations, government entities and corporations. Previously, Maura was a vice president in the corporate responsibility practice at APCO Worldwide, a global communication, and stakeholder engagement firm.



ICAST

ICAST™ develops and implements market-based solutions for issues that plague underserved communities.

Jequita (JP) McDaniel **Sustainability Manager**

Jequita (JP) McDaniel, Ph.D. is a community engagement consultant and also teaches at the university level. She has extensive experience with service learning, has a doctorate degree in the new field of Ecopsychology, a master's in psychology, and also a master's teaching certificate in Adult Education, Training, and Program Development.



Ravi Malhotra **President**

Mr. Malhotra has 27 years of experience as a social entrepreneur and engineer. He has established numerous social and environmental enterprises in the US and internationally, using sustainable technologies. He has led award-winning R&D efforts and has successfully launched new products and services for a variety of industries.



Innovations for Poverty Action

Innovations for Poverty Action (IPA) is a research and policy non-profit that discovers and promotes effective solutions to global poverty problems.

Caton Brewster **Senior Research Analyst**

Caton Brewster supports field teams, manages data and assists in analysis for various randomized controlled trials (RCTs) led by Dean Karlan at Innovations for Poverty Action. Currently, she is working on a project that will pool beneficiary feedback data from 7 different RCT endline surveys around the world. The project is in the data collection stage, thus she is primarily supporting instrument design, data collection and data management at this time. Before joining IPA in 2014, Caton studied at Washington University in St. Louis, where she received a BA in Economics in 2014.



Sneha Stephen **Research Manager**

Sneha Stephen manages Professor Dean Karlan's research portfolio, which includes managing a team of Research Analysts based in New Haven and providing support to various IPA country offices as required. Sneha joined IPA in 2014 and previously worked on the Financial Inclusion Program's policy and communication activities. Prior to joining IPA, Sneha worked at the Centre for Microfinance in India, where she managed two randomized evaluations in microfinance and insurance. She holds an MA in Economics and Politics from the Albert-Ludwigs-University of Freiburg, Germany and a BA in Economics from the University of Pune, India.



ioby

ioby mobilizes neighbors who have good ideas to become powerful citizen leaders who plan, fund and make positive change in their own neighborhoods.

Elisa Gilson **Grants Manager**

Elisa is the Grants Manager at ioby, a nonprofit crowdfunding platform for neighborhood projects. She leads grant development and reporting and so is endlessly curious about better ways to collect, manage, analyze, and respond to data. Her professional experience is in technical reporting for social justice tech organizations and agencies.



Keystone Accountability

Keystone Accountability is a consulting firm to NGOs that specializes in setting up Constituent Voice™ feedback loops and is developing an online Feedback Commons where organizations can access curated questions/tools/resources and contribute to generating comparative data sets.

David Bonbright **Chief Executive**

David is a human rights lawyer, co-founder and Chief Executive of Keystone Accountability. David's thirty-plus year career in social justice has focused on strengthening civil society, with roles cycling between organized philanthropy and social entrepreneurship. Keystone is a proponent for a lean approach to measurement and performance management through feedback systems using the Constituent Voice methodology.



Marc Maxmeister **Chief Innovator**

Marc (Chief Innovator) oversees Keystone's transition from a pure consultancy to a data company with an online user experience. Marc is a PhD neuroscientist and has field experience in Africa with Peace Corps in The Gambia, (1999-2001), Fulbright (2003-2004), and runs GlobalGiving's East African storytelling project (2010-2016). He blogs at chewychunks.wordpress.com.

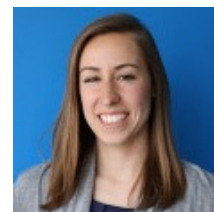


LIFT

LIFT is a national nonprofit dedicated to helping families break the cycle of poverty. By fostering relationships between low-income parents (members) and dedicated volunteers (advocates), we help families build the strong personal, social and financial foundations to secure immediate, critical needs and to achieve long-term goals and aspirations.

Katharine Lindquist **Evaluation Manager**

Katharine is the Evaluation Manager at LIFT, a national nonprofit dedicated to helping families break the cycle of poverty. In this role, she supports LIFT's program work through data analysis and the strategic development of evaluation tools. Before coming to LIFT, Katharine spent four years working in social policy research and evaluation. Most recently, she served as a Research Analyst at the Brookings Institution's Brown Center on Education Policy, exploring issues in K12 and higher education. Prior to that, she worked as a Research Assistant at Mathematica Policy Research, focusing on education, health and disability policy. Katharine holds a B.A. in Economics from Carleton College.



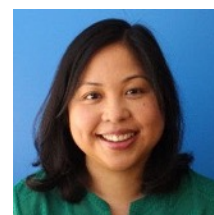
Kirsten Lodal **CEO and Co-Founder**

Kirsten Lodal is the CEO and co-founder of LIFT, a national nonprofit working with, not for, low-income families. A fierce advocate for re-thinking the design of America's anti-poverty programs, she's spread LIFT's message from the White House to the New York Times. Kirsten is a 2015 Aspen Institute Ascend Fellow.



Maria Peña **President**

Maria Peña is the inaugural president of LIFT, one the nation's foremost anti-poverty organizations. Maria leads LIFT's day-to-day operations and drives innovation and alignment across all aspects of LIFT's work. Before joining LIFT, Maria was the global head of economic development at Vital Voices, an international NGO.



Sophia Sahaf **Vice President of Program Evaluation**

Sophie joined LIFT in 2013 as the organization's first evaluation expert before moving into a broader program design and oversight role. She manages the National Program Team to ensure high quality program design, implementation and evaluation. With operations in Washington, D.C., Chicago, Los Angeles and New York City, LIFT provides career and financial coaching services to parents with young children. Prior to LIFT, Sophie was a Director for Monitoring, Evaluation and Economics at the Millennium Challenge Corporation where she supported design and evaluation of large-scale investments in wide ranging areas including the power sector, vocational education, and government anti-corruption efforts. At MCC, Sophie worked in lockstep with country partners in Indonesia, Mongolia and Sierra Leone to ensure that investments targeted constraints to economic growth and then rigorously evaluated those projects for impacts on household poverty. Sophie earned a Bachelors degree from Tufts University and a Masters from the Fletcher School.



Liquidnet

Liquidnet is a Fund for Shared Insight Core Funder.

Brian Walsh

Executive Director, Liquidnet for Good

Brian Walsh oversees corporate impact for Liquidnet, a New York-based financial services company that uses technology and a trusted global network to make capital markets more efficient. As Head of Corporate Impact at Liquidnet For Good, Brian is responsible for using the resources of Liquidnet to have a positive impact in the world. Liquidnet provides its employees with the inspiration and the opportunity to give back through local programs in the communities where the company has operations and through a groundbreaking partnership with the Agahozo-Shalom Youth Village (ASYV), an innovative home, community, and high school for orphans in Rwanda. Liquidnet is also focused on leveraging its expertise, core strengths, and knack for innovation to help make the work of the social sector more effective; and works to accelerate the practice of impact investing through programs and partnerships that build the capacity of this emerging field.



Lone Star Circle of Care

LSCC is a Federally Qualified Health Center that provides comprehensive primary care and integrated behavioral health services, regardless of ability to pay, for residents of Central Texas.

Katesha Murrell-Dann

Associate Practice Administrator

Katesha Murrell-Dann is an Associate Practice Administrator at Lone Star Circle of Care (Georgetown, Texas) and a recent graduate from Texas A&M Health Science Center (Master of Health Administration). In her current role she is responsible for overseeing front desk operations at several of the organization's clinic locations.

Maria Sayles

Clinic Site Manager

I am a Clinic Site Manager with Lone Star Circle of Care for 7 years. I manage two pediatric primary care locations and am glad that I am able to attend.

MariAnna Jones

Patient Experience Analyst

MariAnna Jones is a graduate of Auburn University and The University of Texas School of Public Health. She currently serves as a Patient Experience Analyst at Lone Star Circle of Care where she is responsible for leading and developing projects that improve the patient experience.

Memorial Assistance Ministries

MAM assures that families in the Houston area have the means to meet their basic needs.

Liliana Padron

ESL & Citizenship Coordinator

Liliana holds a Bachelor Degree in Industrial Engineering and TESOL Certification. Her passion is to serve her community and to help enrich lives through learning. She believes that education is the key to helping people out of poverty and on the road to self-sufficiency.



Takeshia Richardson

ETO Database Administrator

Takeshia Richardson is an accomplished professional with experience in Information Technology and continuous quality improvement. She is also experienced in project management, business operations, and individual and group training.

National Center for Civic Innovation / White House Office of Science and Technology (OSTP)

Shared Insight is funding a fellowship through NCCI to the White House OSTP to promote and advance feedback loops within the public sector.

Kate Gage

Senior Advisor

Kate joined the White House Office of Science and Technology Policy in 2016 after 5 years at USAID in the Global Development Lab focusing on Science and Technology for Global Development. She graduated from Dartmouth College and worked for the International Rescue Committee and the 2008 Obama Campaign before joining the Administration.



Neighborhood Housing Services of Chicago

NHS aims to create opportunities for people to live in affordable homes, improve their lives and strengthen their neighborhoods throughout Chicago.

Anne Cole

Manager, Impact Evaluation and Policy

Anne Cole is responsible for implementing evaluation projects for NHS of Chicago, and translating program data and into policy recommendations to improve NHS programs and inform local and national policy decisions. Prior to NHS, Anne worked at a nonprofit research and consulting firm, providing data analysis and insight to enhance program and planning decisions made by civic, social service, and philanthropic organizations. Anne received her Bachelor of Arts from Kenyon College, and Master of Urban Planning and Policy from University of Illinois Chicago.

Heather Hoover
Program Analyst

Heather Hoover, Program Analyst at Neighborhood Housing Services of Chicago has 10 years of experience in the housing counseling industry with expertise in program management and client service. Heather holds certifications in housing counseling and program management from the NeighborWorks Center for Homeownership Education and Counseling.

New Door Ventures

New Door prepares disconnected youth ages 16-24 in San Francisco for success in work and life through paid jobs, intensive case management, skill-building workshops, and education support.

Lawrence Rose
Operations Manager

With 10 years of nonprofit experience in a variety of roles, Larry excels at providing the infrastructure and processes needed to help organizations grow. Serving as Operations Manager, he ensures that New Door functions on a daily basis. He's also the Administrator for Salesforce, Cornerstone, and other organization systems.



Tess Reynolds
CEO

Tess is CEO of New Door Ventures, a San Francisco based nonprofit that helps disconnected youth, age 17-24, get ready for work and independent adulthood through paid jobs, skill-building workshops, case management, and individualized educational support.



Nurse-Family Partnership

NFP is an evidence-based nurse visitation program that serves low-income women pregnant with their first child.

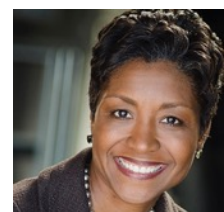
Alexa Cares
Quality Specialist

Alexa Cares is Quality Specialist at the Nurse-Family Partnership National Service Office. In addition to working on administering and analyzing the Listen for Good survey, she assists agencies with continuous quality improvement activities to inform program improvement.



Benny Samuels
Chief, Marketing & Communications

Benny has more than 25 years of experience in integrated marketing communication, and has dedicated her career to improving the life of underserved populations; including immigrants, non-English speakers, people of color and the poor. Benny is originally from Panama, and holds a Masters Degree in Mass Communications from the University of Colorado at Boulder.



On The Move

On the Move incubates initiatives based on the interests, passions and commitment of young leaders that represent the diversity of their communities in the Bay Area.

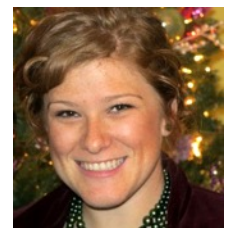
Amber Twitchell **Associate Director**

Amber Twitchell has been working in the youth development field for over 15 years. She received her Graduate Degree from CSU Sacramento in the field of Public Policy and Administration and uses these skills to develop and lead youth-engagement processes designed at creating systemic policy change within local government structures.



Lauren Biehle **Program Director**

Lauren has worked in vocational focused non-profit work for 5 years. She specializes in social enterprises, job training, job development skills, food service, hospitality, financial management, facilities management, as well as peer development and leadership. Lauren holds a Bachelor in Science with a Business Management Major and Marketing Minor from Siena College in Loudonville, New York and an Associate in Arts from the Culinary Institute of America, Greystone.



Oregon Museum of Science and Industry

Located in Portland, OMSI inspires curiosity through engaging science learning experiences, fosters experimentation and the exchange of ideas, and stimulates informed action.

Liz Wright **Research, Evaluation, and Impacts Manager**

Liz Wright has over nine years of experience in research, evaluation, and visitor studies related to informal learning environments, such as museums, zoos, and aquariums. She holds a masters degree from the Museology Program at the University of Washington and is currently located in Portland, Oregon.



Marcie Benne **Director of Engagement Research & Advancement**

Since 2001, Marcie has helped the Oregon Museum of Science and Industry and its partners advance the research and evaluation of exhibits, programs, and organizational initiatives. She has focused on developing research and evaluation capacities, a team that conducts research and evaluation in both English and Spanish, and culturally-responsive practices.



ORS Impact

ORS Impact is the evaluation partner for Fund for Shared Insight.

Paula Rowland **Senior Consultant**

Paula Rowland, PhD, ORS Impact. Paula is a seasoned evaluator who finds ways to translate data and findings to all stakeholders. She has worked on a wide range of projects focused on improving education, health and social well-being at individual, community, state, national and international levels.



Our House

Our House empowers homeless and near-homeless families and individuals to succeed in the workforce, in school, and in life through hard work, wise decision-making, and active participation in the Little Rock Arkansas community.

Georgia Mjartan **Executive Director**

Georgia has served as Executive Director for eleven years. Under her leadership, Our House has enjoyed dramatic growth in its programs, budget, staff, facilities, client volume, and mission impact. Georgia was named “Nonprofit Executive of the Year” in 2011, and Our House was named “Nonprofit Organization of the Year” in 2015. Georgia holds bachelor’s degrees in English and Political Science from the University of Arkansas at Little Rock, a master’s degree in Public Affairs and Political Communications from the University of Ulster in the UK, and a post-graduate diploma from the Harvard Kennedy School of Government.



Joy Ritchey **Grants Manager**

Joy is the Grants Manager at Our House in Little Rock. Prior to joining Our House in 2011, she worked in book publishing. Joy is the architect and leader of Our House’s Listen for Good project. A Mellon Fellow in the Humanities, she received a BA in English from the University of Arkansas at Little Rock and an MA in English from the University of Michigan.



PACE Center for Girls

PACE is a Florida based program providing girls and young woman an opportunity for a better future through education, counseling, training and advocacy.

Lymari Benitez **Director of Program Evaluation**

Dr. Benitez oversees PACE Center for Girls, Inc. Department of Program Evaluation and is responsible for data collection, analysis and technical assistance regarding



data quality and interpretation. Prior to PACE, she served as lead evaluator of the Tennessee Statewide System of Care Expansion Initiative for Children and Youth and as Senior Research Associate at Harlem Children's Zone.

Phoenix Center

Based in Texas, Phoenix Center is committed to meeting the need for high-quality, affordable mental health care for children and families in need.

Sarah Rosen Garrett **Founder / Executive Director**

Sarah is a Registered Play Therapist and licensed clinical social worker with over 18 years of committed professional experience with children and families. She is the Founder and Executive Director of Camp Phoenix and the Phoenix Center, which she created in 2007.



ProUnitas Inc.

ProUnitas seeks to facilitate the effective entry, coordination and implementation of Houston's existing educational, health and social services for underserved communities.

Adeeb Barqawi **President & CEO**

After working for Pfizer Pharmaceuticals and attending graduate schools for Physiology and Biophysics at Georgetown University and Johns Hopkins University for Brain-Based-Learning, Adeeb Barqawi, had the opportunity of joining Teach For America as a Physics teacher. Currently, Adeeb is the President & CEO of ProUnitas, a system based organization that facilitates the effective entry, coordination and implementation of Houston's existing educational, health and social services for underserved communities.



Damon Hoyle **Director of Systems Coordination**

Damon Hoyle is a Houston, TX native. Prior to joining ProUnitas, Damon's career began as a 2007 Teach For America Corps member in Houston. He has taught first, second, fifth, and sixth grade, along with coaching 7th & 8th graders. Damon has also been an instructional coach and Dean of Operations for KIPP Houston Public Schools.

Public Lab

Public Lab is a community developing and applying open-source tools to address environmental issues that affect people.

Shannon Dosemagen **Executive Director**

Shannon is Executive Director of the Public Lab nonprofit. With over fifteen years of experience in community organizing and education, Shannon has worked with environment and public health groups across the U.S addressing declining freshwater resources, coastal land loss and building participatory monitoring programs with communities neighboring industrial facilities.

Stevie Lewis **Outreach Manager**

Stevie has a background in environmental studies and community development. Stevie's interest is in building community resilience through environmental initiatives. Stevie holds a BA in Environmental Studies from Dickinson College. As a 2012 Rotary Ambassadorial Scholar, Stevie completed a MSc in Environment and Development from the University of Edinburgh.



Queer Women of Color Media Arts Project

QWOCMAP promotes the creation, exhibition and distribution of new films/videos that address the vital social justice issues that concern queer women of color and our communities, authentically reflect our life stories, and build community through art and activism.

Kebo Drew **Managing Director**

Drew is a multi-lingual 2nd generation activist, 3rd generation LGBTQ femme from the South. She is a nonprofit professional, arts administrator and producer, writer, dancer and filmmaker. She designed many of QWOCMAP's signature projects, including its Community Partner program, it Reels of Resistance presentation and its Reel Equity Consultation practice.



Madeleine Lim **Founding Executive/Artistic Director**

Lim founded Queer Women of Color Media Arts Project to create a community of artist-activist leaders that would change the face of filmmaking and social justice movements. She is an award-winning filmmaker with more than 25 years of experience whose films have screened internationally and broadcast to millions on PBS.



REDF

REDF is an intermediary that provides grants and technical assistance to employment social enterprises – businesses with a double-bottom line that hire and provide training to people facing barriers to employment. REDF has a focus on those who have faced homelessness, incarceration, mental health illness, or “opportunity youth.”

Casey Tsui

Senior Associate, Learning & Impact

Casey Tsui is REDF’s Senior Associate of Learning & Impact. Based in San Francisco, Casey manages REDF’s data and evaluation efforts to determine the impact of REDF’s portfolio of social enterprises on those they serve. REDF is embedding a perceptual feedback study into their current SIF evaluation with RTI International.



Regional Food Bank of Oklahoma

Regional Food Bank is the largest private domestic hunger-relief charity in Oklahoma - providing enough food to feed more than 126,000 every week, 37 percent of which are children.

Cari Ogden

Vice President of Community Initiatives

Cari Ogden has more than 20 years of non-profit experience, including working towards the alleviation of poverty in Eastern Europe and Africa. She is the Vice President of Community Initiatives at the Regional Food Bank of Oklahoma where she works to remove barriers to accessing food for hungry Oklahomans.



Katharine Morgan

FRC Capacity Development Coordinator

Katharine serves as the Food & Resource Center (FRC) Capacity Development Coordinator, at the Regional Food Bank of Oklahoma. Our Food & Resource Centers are high-capacity, client-choice food pantries, and my role is to support them with building capacity, resource development, designing and documenting best practices, and assisting in community collaboration efforts. We currently have 12 operational FRCs and four in the development phase.



ReMerge of Oklahoma

ReMerge is a comprehensive female diversion program designed to transform pregnant women and mothers facing incarceration into productive citizens in Oklahoma.

Caitlin Redding Taylor

Deputy Director

Caitlin Redding Taylor is Deputy Director of ReMerge, a nonprofit dedicated to breaking the cycle of incarceration. A lifelong Oklahoman, Caitlin attended



Oklahoma City University, receiving a degree in Justice Studies. Caitlin has been able to combine her education with her personal passions, working with ReMerge since inception in 2011.

Julia Ayala Harris
Program Administrator

Julia Ayala Harris manages a custom-built data system for ReMerge. This system encompasses detailed client information, enables easy reporting and analyzing of trends. Julia comes with 20 years of experience in the nonprofit industry, a degree in nonprofit management, and a certification from IIRR in Participatory Monitoring and Evaluation.



Rockefeller Philanthropy Advisors

Fund for Shared Insight is a sponsored project of RPA. RPA provides grants management services and infrastructure support for Shared Insight.

Meenakshi Abbi
Senior Manager, Sponsored Projects

Meenakshi Abbi joined RPA's San Francisco office in May 2012. As a member of the Sponsored Projects Team, Meenakshi manages projects focused on a range of issues including education, capacity building, diversity, feedback, etc. Most recently, Meenakshi worked at Tides for over four years as a program manager for fiscally sponsored 501(c)(3) and 501(c)(4) projects, and helped re-launch Tides Advocacy Fund. She was also Director of the Small Business Development Center Technology Advisory Program, a nonprofit dedicated to helping small businesses effectively utilize technology. She comes to RPA with a diverse background ranging from directing programs and computer programming to workforce development and volunteering for social justice organizations.



RTI

RTI works with REDF on their feedback research project.

David Silver
Director

David Silver is the Director of the Center for Evaluation and Educational Equity at RTI International. He has worked in philanthropy and in several nonprofit and university-based research centers where he has designed and led evaluations of federal, state, and nonprofit-funded programs for more than 20 years. Dr. Silver specializes in indicator development, multilevel modeling, and a wide range of methods for applied measurement of impact. His Center places a strong emphasis on clear and concise communication of technical findings for practitioners and policy-makers.



Samaritan Center

Samaritan Center works to improve the mental, physical, and spiritual health of children and families in Central Texas.

Carlos Rivera **Chief Executive Officer**

Carlos has been the CEO at the Samaritan Center (SC) for the past year and a half. He has 25+ years of experience in public health sector, including 16+ years of senior and executive responsibility. Specializing in organizational and staff development, Carlos has worked with multiple several agencies on evaluating their workplace culture and subsequently improving the work environment leading to improved employee morale.

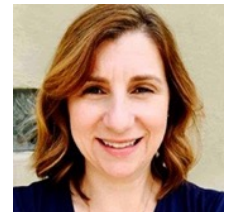


Second Harvest Food Bank of Santa Clara and San Mateo Counties

Second Harvest is a primary source of food for individuals in the Silicon Valley region with limited incomes and few resources to access healthy food.

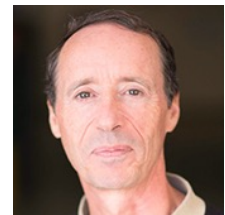
Amy Kaiser **Director of Programs**

Amy Kaiser joined Second Harvest Food Bank as Director of Programs in January of 2016 after managing programs and IT in Social Services. Amy is responsible for overseeing Senior, Family and Produce direct-service programs that serve over 55,000 individuals every month.



Bruno Pillet **Vice President of Programs & Services**

Bruno Pillet joined Second Harvest Food Bank as Vice President of Programs and Services in 2015 after a productive career in the high-tech industry. He came to the Food Bank in 2014 through an Encore Fellowship, which places professionals from the for-profit sector into high-impact roles in the nonprofit sector. As an Encore Fellow, Bruno led a successful pilot project for Second Harvest, which tested new approaches to serving client families, and helped to implement key planning and process improvement tools to help Second Harvest achieve more efficient results. Bruno brings his many years of experience in customer service and business process improvement to his role at Second Harvest, where he oversees the programs and services that ensure everyone in our community has access to the nutritious food they need to thrive. Bruno has an MBA in Finance from the McCombs School of Business at the University of Texas at Austin.



Shelby Residential and Vocational Services (SRVS)

SRVS seeks to enhance the lives of individuals in West Tennessee with intellectual and developmental disabilities and believes that all people, regardless of ability, have the right to live, work and play in their own communities as fully integrated members of society.

Laura Fischer

Development Project Manager

Laura serves as Project Manager in SRVS Development Department where she oversees grants management and program evaluation. Prior to joining SRVS, she was a researcher and manager with the Washington DC-based Aspen Institute. Laura holds a Bachelor's of Science in Social Work and Master of Public Administration, both from the University of Missouri.



Troy Allen

Director of Employment and CHOICES Services

Troy Allen, SRVS Director of Employment and CHOICES Services, has worked in the disability services field for 27 years. He has played an integral role in transitioning SRVS to a community and employment-based model of services. Troy holds a Bachelor's Degree in Business Management and has extensive project management and supervisory experience.



Spitfire Strategies

Spitfire is the communications partner for Fund for Shared Insight.

Lauren Werner

Director

Lauren is a Director with Spitfire Strategies, a national communication firm that works with the Fund for Shared Insight to help create their vision of a better world.



Monisha Som

Vice President

Monisha is a Vice President at Spitfire, a communication firm that works with foundations and nonprofits and provides counsel and support to Shared Insight.



Maura Zehr

Director

Maura Zehr brings a decade of experience in journalism and nonprofit communication consulting to lead strategic planning, research and implementation on a variety of issues at Spitfire, including early childhood education, health and nutrition, environmental conservation, coastal restoration and education reform.

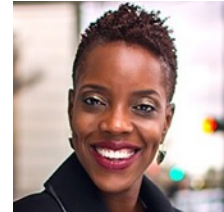


Springboard To Opportunities

Springboard connects families living in affordable housing with resources and programs that help them advance themselves in school, work and life in Maryland and Mississippi.

Aisha Nyandoro **Executive Director**

Aisha Nyandoro is the Executive Director of Springboard To Opportunities. Springboard provides strategic, direct support to residents of affordable housing. The organization's service delivery model uses a "radically resident-driven" approach designed to improve quality of life and end the generational poverty trajectory. Nyandoro has more than a decade of experience developing, implementing, and evaluating programs aimed at improving the quality of life for individuals with limited resources.



Jamie Bardwell **COO**

Jamie joined Springboard to Opportunities in August 2016. Prior to joining Springboard, Jamie served as Deputy Director of the Women's Foundation of Mississippi. During her seven years at the Women's Foundation, she created new grantmaking and advocacy programs to increase family economic security and raised over \$4.5 million from foundations and state government. Before joining the Women's Foundation she was a Presidential Management Fellow at the Department of Health and Human Services in Washington, DC. Originally from Alabama, Jamie is proud to call Mississippi home; she graduated from Millsaps College and earned a master of public policy from Johns Hopkins University. Jamie is a board member of the Mississippi Access to Justice Commission and the American Congress of Obstetricians and Gynecologists.



SurveyMonkey

SurveyMonkey is a Technology and Data partner for the Listen for Good Initiative

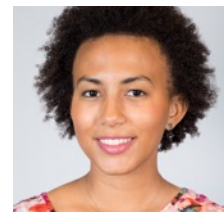
Sarah Cho **Research Scientist**

Sarah Cho is the Survey Research Methodologist and is responsible for integrating best survey practices into everything that goes on at the Monkey. In addition to advising her fellow primates on survey design and data analysis, she serves as president of the Pacific chapter of the American Association for Public Opinion Research. She hails from Colorado although does not ski or snowboard.



Jillesa Gebhardt **Research Associate**

Jillesa is a member of the survey research team at SurveyMonkey and the content manager for the Question Bank, which gives users access to hundreds of methodologically sound questions to help with their surveys. She is originally from Phoenix, AZ but has lived in the bay area for 10 years.



Talent Development Secondary - Johns Hopkins University

TDS is a curriculum development program based out of the School of Education at Johns Hopkins University. TDS aims to build capacity in the highest need schools that contribute the largest number of students to our nation's dropout crisis.

Johann Liljengren **Division Manager**

Johann leads a team of facilitators who provide training and facilitation support to middle and high schools who are working to improve graduation rates. In addition, he coordinates data collection and has been the organizational point person for the implementation of the most recent strategic plan.



Laura Weeldreyer **Chief Program Officer**

Laura is the Chief Program Officer of Talent Development Secondary and a member of the Maryland State Board of Education. She has a twenty-five year career in public education reform, including teaching in New Orleans and Baltimore and eleven years of leadership in the Baltimore City Public Schools' central office.



TeenForce

TeenForce is a social enterprise helping youth gain the skills, habits and work experience to fulfill their potential throughout the Santa Clara County region in CA.

John Hogan **CEO**

Founder of TeenForce, a social enterprise that helps youth acquire the skills, habits and work experience to fulfill their potential. We have a particular emphasis on supporting foster youth with STEM training and employment.

Sonya Trac **Program Manager**

Sonya Trac joined TeenForce in August 2015 as the Program Manager overseeing foster youth programs. She has been working with foster youth and at-risk youth in Santa Clara County since 2003. She looks forward to using the L4G evaluation tools to expand and improve programs offered to opportunity youth at TeenForce.

The Greenlight Fund

The Greenlight Fund is a Listen for Good co-funder.

Margaret Hall **National Executive Director**

Before co-founding the GreenLight Fund with John Simon, Margaret worked in several organizations dedicated to helping nonprofits grow in effectiveness and scale and giving people a way to make a difference in their communities. She was a Fellow at the Center for Effective Philanthropy and prior to that associate director of the Georgia Center for Nonprofits, a statewide organization that supports the nonprofit sector through capacity building, research and advocacy. She has chaired the Boards of Directors of CityCares (now Hands On Network) and Peer Health Exchange Boston, and served on many nonprofit boards including Youth Villages-Massachusetts, Raising A Reader Massachusetts, Friends of the Children-Boston, Social Venture Partners-Boston and Boston Cares. Margaret earned an MPA at the Kennedy School of Government at Harvard University and a BA from the University of Georgia.

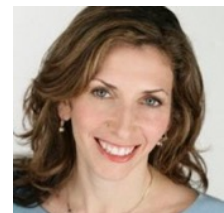


The JPB Foundation

The JPB Foundation is a Fund for Shared Insight Core Funder.

Betsy Krebs **Vice President, Poverty**

Betsy is Vice President, Poverty, at The JPB Foundation. She is involved with JPB's efforts to help low-income populations overcome barriers to opportunity. Betsy's work supports organizations that break the cycle of poverty by creating long-term positive change for disadvantaged communities, specifically in the areas of health and chronic disease, economic opportunity, and democracy. Prior to joining JPB in 2014, Betsy was a consultant to nonprofits and foundations, and was executive director of Youth Advocacy Center – an organization she co-founded.



The Urban Institute

Urban Institute works with Feeding America on their feedback research project.

Molly Scott **Senior Research Associate**

Molly Scott is a senior research associate in the Metropolitan Housing and Communities Policy Center at the Urban Institute. In recent years, much of her work has focused on providing practical research support for nonprofits and local government agencies in planning, implementing, and testing innovative, place-based strategies to improve the lives of the ever-more-diverse low-income population. Nationally, Scott's clients include Habitat for Humanity International, Feeding America, and the Green and Healthy Homes Initiative, with projects ranging from strategic initiative planning to best-practice reviews and national evaluation design.



Somala Diby**Research Assistant**

Somala Diby is a research assistant in the Metropolitan Housing and Communities Policy Center. Her research interests include urban development, neighborhood development, housing, race, ethnicity, class, and gender. She is involved in several community-based neighborhood development projects in Washington, DC, including the Promise Neighborhood initiative in Kenilworth-Parkside and Promoting Adolescent Sexual Health and Safety in a public housing development. She also supports research on affordable housing, two-generation models, and food bank operations.



The Village for Families & Children

Based in Hartford, CT, The Village is regional multi-service mental health organization providing behavioral health, early childhood and youth development and family support services.

John Schnyder**Senior Research Assistant**

I am new to the nonprofit sector and work in the Process Management and Analytics department at The Village for Families & Children. Prior to this, I worked for technology firms in business operations, manufacturing and customer education.

The Whitman Institute

The Whitman Institute is a Listen for Good co-funder.

John Esterle**Co-Executive Director**

John Esterle is the Co-Executive Director of The Whitman Institute, an independent foundation in San Francisco that will sunset in 2022. TWI's mission is to advance social, political, and economic equity by funding dialogue, relationship building, and inclusive leadership. John began working at TWI in 1988 as a Research Associate and in 1999 became its Executive Director. In 2004, following the death of TWI's Founder, Fred Whitman, and John led TWI's transition from an operating to a grantmaking foundation. John serves on the boards of Philanthropy for Active Civic Engagement, Images and Voices of Hope, and the Germanacos Foundation.



Union Capital Boston

UCB is a mobile-based loyalty program that provides social and financial service rewards to low income families in exchange for community involvement in schools, health centers, and civic programs.

Anna Leslie

Director of Development

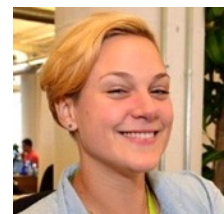
Anna Leslie is the part-time Director of Development for Union Capital Boston. She received her Masters in Public Health from the Colorado School of Public Health in 2012. She formerly taught at the Good Shepherd Nativity School, New Orleans. Anna is also the part-time Coordinator of the Allston Brighton Health Collaborative in Boston.



Laura Ballek

Director of Organizing and Technology

Laura Ballek is a former tutor turned educator turned community organizer/social entrepreneur. She lives in Boston and really enjoys snacks.



United Way of Buffalo & Erie County

The United Way brings people, organizations and resources together to improve community well being, with specific focus in the areas of education, financial stability and health and wellness.

Aaron Krolikowski

Principal/Consultant Loop Analytics

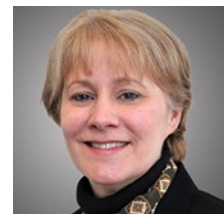
Working from Buffalo, NY, Aaron provides SMS feedback, survey, and analytics services to multiple United Ways, foundations, and a variety of small- to medium-sized nonprofit organizations. Other areas of interest include global water challenges, neighborhood reforestation, and Rust Belt revitalization.



Mary Comtois

Director of Health Initiatives

Mary K serves as the Program Director of Health Initiatives at the United Way of Buffalo & Erie County. Currently, she leads the Healthy Start, Healthy Future for All Coalition, which is dedicated to promoting positive health outcomes for pregnant mothers, infants and children. In this role, she was responsible for coordinating a multi-sector initiative through a NYS Department of Health grant, implementing evidence-based infant nutrition practices in hospitals, medical offices, child care centers, home visiting programs and peer support centers. In this capacity, she also served as a member of the 2014 New York State Prevention Agenda Faculty, providing training for professionals from public health, hospitals, universities, community-based organizations on promising practices in health care settings. Mary K received her BA in Psychology from the State University of New York at Geneseo and an MBA Certificate from the University at Buffalo, School of Management.

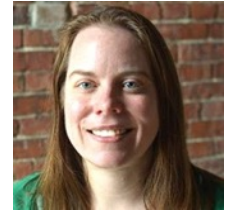


United Teen Equality Center (UTEC)

UTEC ignites and nurtures the ambition of Lowell 's most disconnected young people to trade violence and poverty for social and economic success.

Erin Harris **Director of Evaluation**

Since 2013, Erin has served as the Director of Evaluation at UTEC, a youth development organization supporting proven risk youth in Lowell, Massachusetts. From 2001 to 2013, she worked as researcher at Harvard Family Research Project. Her primary interest is in advancing evaluation to support learning and continuous improvement.



Zenub Kakli **Chief Program Officer**

Zenub joined UTEC in 2010 as the Director of Evaluation and Learning. In that position, she collaborated with program staff to document and reflect upon their work. As UTEC's first Chief Program Officer, Zenub works with staff to ensure that program operations are smooth, mission driven, and lead to the best developmental outcomes.

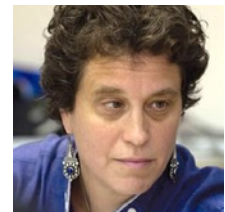


William and Flora Hewlett Foundation

William and Flora Hewlett Foundation is a Fund for Shared Insight Core Funder.

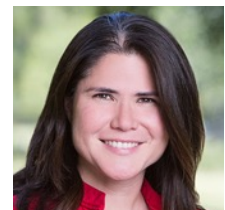
Fay Twersky **Director, Effective Philanthropy Group**

Fay is director of Hewlett's Effective Philanthropy Group. In that capacity, she oversees five functions including cross-foundation strategy support, evaluation and organization learning as well as grantmaking in support of organizational effectiveness and a strong philanthropic sector. Prior to joining Hewlett in 2011, Fay advised Yad Hanadiv (the Rothschild Family Foundation), served as director and member of the leadership team of the Bill and Melinda Gates Foundation – designing and developing their Impact Planning & Improvement division, and was a founding principal of BTW – Informing Change, a strategic consulting firm.



Leeanne Oue **Program Associate**

Leeanne provides project management support for the Philanthropy Grantmaking and Organizational Effectiveness pillars of the Effective Philanthropy Group, which aims to strengthen the capacity of grantees and of the philanthropic sector. Previously, Leeanne was Administrative Director at the Hawaii Insurers Council, and Public Relations Coordinator at the JCCC Foundation, the charitable arm of the Japanese Chamber of Commerce and Industry of Chicago. At the JCCC Foundation, she managed the organization's grantmaking program and coordinated the annual U.S.-Japan Educational Exchange Program. Hailing from Hawaii, Leeanne is a graduate of Kenyon College and holds an M.A. in Japanese from Stanford University.



Lindsay Austin Louie**Program Officer, philanthropy**

Lindsay is the Program Officer for Philanthropy Grantmaking at Hewlett. In that capacity, she leads two grantmaking strategies focused on increasing philanthropic effectiveness: (1) Knowledge Creation and Dissemination, and (2) the Hewlett Foundation's participation in Fund for Shared Insight. Prior to joining Hewlett in 2013, Lindsay served as executive director of the Silicon Valley Venture Fund (SV2), and ran business development for Goodwill Industries of San Francisco, San Mateo and Marin Counties.

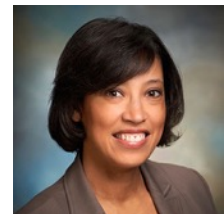


W.K. Kellogg Foundation

W.K.Kellogg Foundation is a Fund for Shared Insight Core Funder.

Arelis E. Diaz**Program Officer, Office of the President**

Arelis is a program officer for the Office of the President at Kellogg. In this role, she is responsible for identifying and nurturing opportunities for affecting positive systemic change within communities, and executing programming efforts that are aligned with the organizational direction. She leads corporate responsibility efforts and special initiatives of the president and CEO, on behalf of the organization. Arelis formerly served as a program officer working with Kellogg's Education & Learning and Family Economic Security teams. Before joining Kellogg in 2010, she had a 15-year career in the Michigan public school system, serving most recently as an assistant superintendent for curriculum and instruction and human resources.

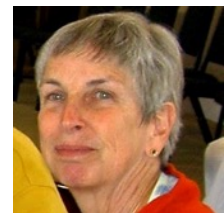


Wishcamper Family Foundation

Wishcamper Family Foundation is a Listen for Good co-funder.

Carol Wishcamper**President - Board of Directors**

Carol Wishcamper serves as Board Chair of Springboard to Opportunities providing multi-layered two-generation programs to residents of low-income housing in Mississippi and Maryland. Carol is a board member of the Elmina B. Sewall Foundation and the Wishcamper Family Foundation in her home state of Maine. Carol works as an organizational consultant to non-profit organizations providing leadership development, strategic planning and coaching.



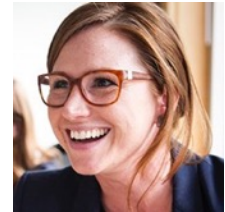
YouthTruth Student Survey

YouthTruth is a national survey project run by the Center for Effective Philanthropy which focuses on gathering feedback from students nationwide in grades 3 through 12 for use by school leaders and education funders to make better decisions to lead to better outcomes for students.

Sonya Heisters

Director of Partnerships

Like many educators, Sonya Heisters' love for teaching is in her DNA. Her grandmother was a principal, her mother, a high school teacher, and her brother is a celebrated middle school special education teacher. Her work in education has spanned every age-range. Prior to joining YouthTruth, Sonya served as a Director at the Presidio Graduate School. Her experience in K–12 education includes work as Director of University Tutoring, as the Tutoring Program Manager for Kaplan, and as the Site Director of a K–5 program in rural CA. Sonya graduated from Lesley University in Cambridge, MA with degrees in English and Non-Profit Management of Education Programs. She completed her student teaching practicum at Cambridge Rindge and Latin High School.



Other Consultants and Resource People

At Fund for Shared Insight, we are interested in exploring the connection between our feedback work and issues of diversity, inclusion and equity. To this end, we have invited several individuals and organizations to spend the day with us as listeners and learners so they can better understand our work and potentially serve as resource people to Shared Insight and grantees in the future.

Bright Research Group

Brightstar Ohlson **CEO & Principal**

Brightstar has led the design and evaluation of innovations to strengthen community health and promote equity for the past 15 years. A bilingual/bicultural English/Spanish speaker, Brightstar is personally and professionally committed to promoting more equitable relationships between communities of color and public systems, as well as broadening the number of stakeholders that are engaged in solving organizational and community problems. She holds a master's degree in education from the University of New Haven and a bachelor's degree in anthropology from Yale University.



D5 Coalition

Kelly Brown **Director**

Kelly Brown is Director of the D5 Coalition, a five-year effort to advance philanthropy's diversity, equity and inclusiveness. Ms. Brown has served as Director of Programs and Evaluation at Marguerite Casey Foundation and as Grants Director at the Vanguard Public Foundation.



Esther Kim Consulting

Esther Kim **Principal Consultant**

Esther Kim is an independent consultant focusing on strategy and planning for nonprofits and philanthropy, with a commitment to equity and social justice. Prior to independent consulting, Esther led programs at REDF, a venture philanthropy supporting social enterprises employing people facing barriers. She has also worked at McKinsey & Co, and as an environmental consultant. Esther holds a BS and two MS degrees from MIT, and lives with her family in San Francisco, CA.



E-Tan Consulting

Elizabeth Tan

Principal

I have 20 years of experience leading organizational strategy, systems change, and leadership development efforts to advance social justice. Since 2011, I have worked as an independent consultant to provide innovative leaders within the non-profit, philanthropic, and public sectors with customized strategies and tools to increase their effectiveness and impact.



Gilbert & Associates

Linetta Gilbert

Managing Partner

Linetta J. Gilbert serves as Managing Partner of Gilbert & Associates. A respected leader in the philanthropic community, Linetta provides consulting, coaching and network-building support to foundations, large and small non-profits and emerging thought leaders. Her areas of practice include strategy development/planning and technical assistance for advancing organizational and community wide racial equity outcomes; board development; strategic planning; leadership development; and group facilitation. Some of her recent clients include: The Robert Wood Johnson Foundation The W.K. Kellogg Foundation Casey Family Programs Propeller: A Force for Social Innovation The Greater Milwaukee Foundation The Great Greensboro Community Foundation.



IAM Associates

Inca Mohamed

Owner

Internationally recognized for her facilitation and training skills, Inca Mohamed has many years of experience managing and working with nonprofit organizations addressing youth development, sexual and reproductive health and rights, gender equity, and building and sustaining inclusive organizations and groups. Inca has helped hundreds of organizations create effective management and powerful strategies for change.

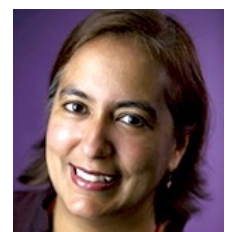


OpenSource Leadership Strategies

Gita Gulati-Partee

Founder and Chief Strategist

Gita Gulati-Partee founded and leads OpenSource Leadership Strategies, Inc., a national consulting practice that amplifies the work of social justice groups as both units and agents of structural change. OpenSource researches, designs, and evaluates racial and social justice efforts, as well as builds capacity of organizations, movements, and leaders to advance racial and social justice. She has published and presented extensively on racial equity, advocacy, education, and philanthropy.



Philanthropic Initiative for Racial Equity

Lori Villarosa

Executive Director

Lori Villarosa has worked within the field of philanthropy for more than two decades. She is currently the Executive Director of the Philanthropic Initiative for Racial Equity (PRE), which is aimed at increasing the amount and effectiveness of resources aimed at institutional and structural racism. PRE focuses on efforts throughout the country, and to a limited extent, internationally, carrying out its mission through capacity-building, education and convening of grantmakers and grantseekers.



The Genius Group Enterprises, Inc.

Carlos Milano Harden

President & Founder

President of The Genius Group Enterprises, Inc. (TGG), Harden has extensive training in philanthropic strategy; nonprofit management; leadership effectiveness; organizational change and development; equity, diversity and inclusion. TGG provides organization strategy and grant-making design support to private foundations; technical assistance and capacity building support to the grantees of foundation-funded initiatives.

